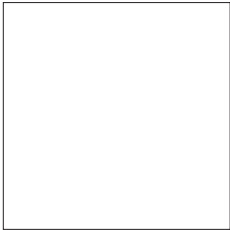


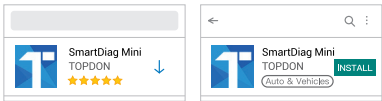
SMARTDIAG MINI

EN



1. Download the SmartDiag Mini App

Search for “SmartDiag Mini” in the App Store or in Google Play Store. The SmartDiag Mini App is FREE to download in the page as shown below.



2. Log In / Sign Up

If you already have a SmartDiag Mini account, please log in with your verified information.
If you do not have an account yet, please sign up first as below:

- Input the username, and the password. Tap “Next”.
- Input your valid email address, and the verification code (which you'll find in the email box after tapping “Get”). It will automatically jump to the home page after inputting the right code.



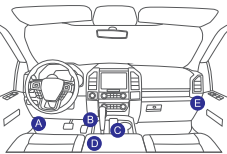
3. Activate a SmartDiag Mini Device

You need to activate the device first before performing any diagnostic functions, or a window will pop up to give you the notification. Tap “Activate” in the popping window, and then input the serial number and the 8-digit activation code to activate and bind your SmartDiag Mini device. *Activation Code is on the first page of the Quick Start Guide.



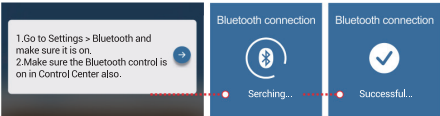
4. Insert the SmartDiag Mini device into the DLC port of your vehicle.

The DLC port is usually located under the dashboard, and above the pedal on the driver's side. Here are the 5 common positions for the DLC port (as shown in the image). Insert the SmartDiag Mini device. A red LED light will illuminate indicating the device is powered on.



5. Bluetooth Connection

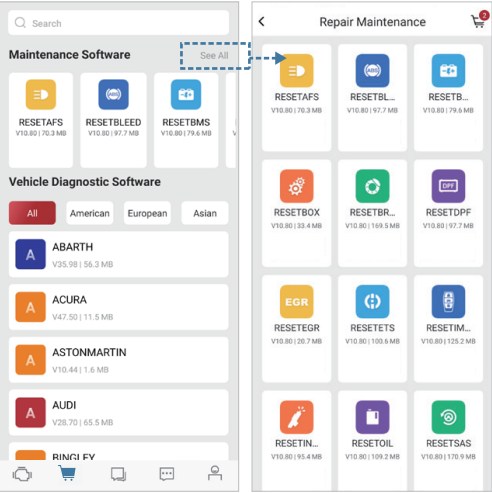
Open the SmartDiag Mini App. The App will automatically search for activated devices. Select your device and establish a successful Bluetooth connection in the App.
*Note that the Bluetooth connection needs to be done in the App, not in the Bluetooth settings in the phone.



6. Download Diagnostics Software

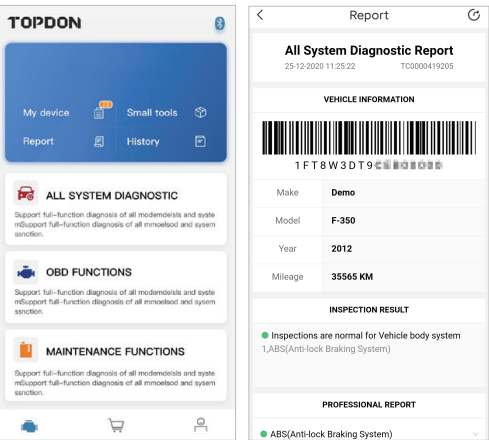
You need to download the corresponding diagnostic software in the “Diagnostic” menu of the App when you initially use the “All System Diagnostic” and “OBD Functions”.

*You don't need to download again afterwards.



7. Start to Use Your SmartDiag Mini

TOPDON SmartDiag Mini will automatically scan all OBDII protocols supported by your vehicle after downloading the corresponding diagnostic software, and will start running the diagnostic software when the protocols are available.
SmartDiag Mini works on most modern vehicles after 1996 which are compatible with OBDII protocols, mainly including ISO 14230-4 (KWP2000), ISO 15765-4 (CAN), ISO9141-2 (ISO), ISO14229 (UDS), and SAEJ 1850 (VPW & PWM).



8. FAQ

- Q: What do the LED lights on SmartDiag Mini indicate?
A: There are 3 lights indicating different modes for SmartDiag Mini.
- | LED | Explanation |
|---------------------|---------------------------------------------------|
| Solid Red Light | There is a malfunction in SmartDiag Mini adapter. |
| Flashing Red Light | The firmware is updating. |
| Solid Green Light | SmartDiag Mini adapter is powered on. |
| Solid Blue Light | Bluetooth is connected. |
| Flashing Blue Light | Bluetooth is in the communication. |
- Q: Why do I need to download the diagnostic software after installing the SmartDiag Mini App?
A: Different vehicle manufacturers require corresponding diagnostics software due to a variety of vehicle manufacturers on the market. SmartDiag Mini will recognize the vehicle manufacturer at first while diagnosing, then it will download the corresponding diagnostics software for being properly functional.
- Q: What vehicles can SmartDiag Mini diagnose?
A: SmartDiag Mini works on most vehicles after 1996 which are compatible with OBDII protocols, covering over 100 vehicle brands.
*The diagnostic software's size and download speed vary by your vehicle's make, model, and year. It requires the stable network connection while downloading the diagnostics software.
- Q: What special functions does SmartDiag Mini support?
A: SmartDiag Mini covers 16 special functions including: AFS RESET, Elec. Throttle RLRN, GEAR LEARN, Immobilizer/Keys, INJECTOR, RESET BRAKE, RESET OIL, RESET SAS, RESET BLEED, RESET BMS, RESET BOX, RESET DPF, RESET EGR, RESET TPMS, SUNROOF, RESET SUS, and growing.
*Special functions vary by vehicle's make, model and year.

- Q: Does SmartDiag Mini need to upgrade the firmware prior to the first use?
A: Yes, it does.
The SmartDiag Mini will check if the firmware is the latest version at the time when the SmartDiag Mini device is connected to your smartphone via Bluetooth. If not, it will upgrade automatically.
- Q: What smartphones can use SmartDiag Mini App?
A: SmartDiag Mini App supports smartphones with Android 5.0 and above, IOS 9.0 and above. It cannot be used on WINDOWS PC.
- Q: Can the SmartDiag Mini App account bind with multiple devices?
A: Yes, you can set up in the App.
- *Visit www.topdon.com/products/smartdiagmini to download the multilingual user manual.